



# **Edinburgh Pentlands Parish Church**

@ the heart of the community

**Parish Profile**



## Foreword

Welcome to Edinburgh Pentlands Parish Church.

Edinburgh Pentlands Parish Church is a recently united congregation from the neighbouring Edinburgh parishes of Juniper Green Parish Church and Colinton Parish Church. In this Parish Profile we set out how we are travelling in our journey of faith, witness and action *@ the heart of our community*.

We are seeking a Parish Minister who will promote change and support us as we move forward.

Our Basis of Reviewable Charge particularly highlights working with children, young people and families, engaging with the community, developing prayer space and developing leadership within our Church by support and training. Inspirational preaching, collaborative working and joyful service are also what we seek in our new Parish Minister.

We hope you are encouraged by where we are and our aspirations and through God's call see this as the Parish for you.

Ian Morrison  
Session Clerk

John Sharp  
Deputy Session Clerk

## Contents

	Page
1.0 <a href="#">Introduction</a>	<a href="#">3</a>
2.0 <a href="#">Formation of Edinburgh Pentlands Parish Church</a>	<a href="#">3</a>
3.0 <a href="#">Location</a>	<a href="#">4</a>
4.0 <a href="#">Our Mission</a>	<a href="#">5</a>
5.0 <a href="#">Diversity &amp; Inclusion</a>	<a href="#">6</a>
6.0 <a href="#">The Congregation</a>	<a href="#">6</a>
7.0 <a href="#">The Kirk Session</a>	<a href="#">6</a>
8.0 <a href="#">Worship Life</a>	<a href="#">8</a>
9.0 <a href="#">Church Activities</a>	<a href="#">10</a>
10.0 <a href="#">Wider Social Life of the Church</a>	<a href="#">13</a>
11.0 <a href="#">Ecumenical Relations</a>	<a href="#">14</a>
12.0 <a href="#">World Church Links</a>	<a href="#">14</a>
13.0 <a href="#">Staff</a>	<a href="#">16</a>
14.0 <a href="#">Church Property</a>	<a href="#">16</a>
15.0 <a href="#">Finance</a>	<a href="#">16</a>

## Appendices

A	<a href="#">Basis of Union</a>	<a href="#">17</a>
B	<a href="#">Basis of Reviewable Charge</a>	<a href="#">19</a>
C	<a href="#">History of Colinton Parish Church</a>	<a href="#">20</a>
D	<a href="#">History of Juniper Green Parish Church</a>	<a href="#">22</a>
E	<a href="#">Statement of Inclusion</a>	<a href="#">24</a>
F	<a href="#">Parish Maps and Key Statistics</a>	<a href="#">25</a>
G	<a href="#">Details of New Manse</a>	<a href="#">29</a>

## 1.0 Introduction

Welcome to Edinburgh Pentlands Parish Church.

We are delighted to present a profile of our parish life and hope that you will find it an uplifting expression of how we are travelling in our journey of faith, witness and action @ *the heart of our community*.

We are a recently united congregation from the neighbouring Edinburgh parishes of Juniper Green Parish Church and Colinton Parish Church.

The previous Parish Ministers from both parishes resigned in 2023 and we now have a vacancy for a new Parish Minister.

The congregation is looking forward to welcoming a new Parish Minister and is keen to work with the successful applicant to move forward on our journey, plan for the future, and embrace change.

We are currently served by one locum Minister of Word and Sacrament with oversight from an Interim Moderator.

## 2.0 Formation of Edinburgh Pentlands Parish Church

The formal union of Colinton Parish and Juniper Green Parish to form Edinburgh Pentlands Parish Church took place on the 1<sup>st</sup> of July 2024.

The activity of bringing the two parishes together began in 2022. A joint group comprising twelve, six from Juniper Green and six from Colinton, including the two Parish Ministers, developed a plan of work and sought to lead, facilitate and enable the early development stages of the formation of the union.

A rallying slogan, ***Walking Together***, was adopted and this helped us work towards consensus and action.

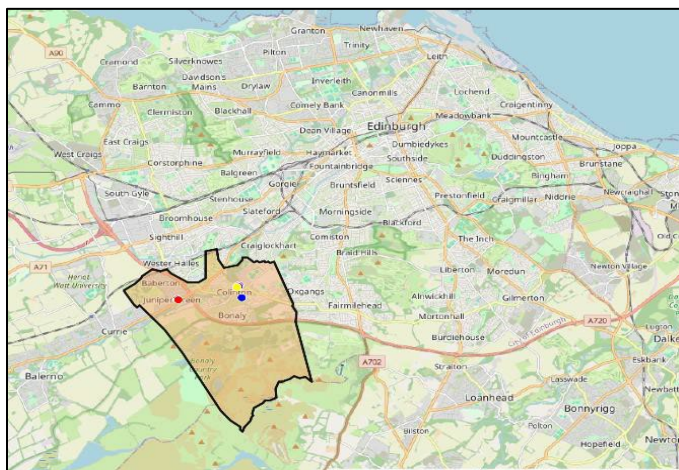
There was a lot of communication with both congregations, keeping them informed and seeking views, including on the name for the new parish, the Basis of Union and the Basis of Reviewable Charge. The two Kirk Sessions had several joint engagements including workshops to discuss and agree key elements.

Copies of the Basis of Union and Basis of Reviewable Charge are included in Appendices to this document.

Both former parishes have long histories and brief summaries of these are also included in the Appendices.



### 3.0 Location



Edinburgh Pentlands Parish is situated in Southwest Edinburgh and contains the village settings of Colinton and Juniper Green, which include the housing estates of Bonaly and Baberton.

Other maps of the parish are included in the Appendices.

The parish area includes a wide range of interesting features, including the Water of Leith, part of the Pentland Hills Regional Park, excellent local amenities, shops and facilities, a rich local history providing tourist attractions, a golf course, two army barracks and lots of local community groups.

The population of the parish is recorded as 11,974.

A summary of other parish statistics is included in the Appendices.

There are 3 Primary schools within the parish boundary, these are:

- Juniper Green Primary School
- Bonaly Primary School, and
- Colinton Primary School



Robert Louis Stevenson



Colinton Tunnel

Merchiston Castle School, an Independent School with nursery and primary provision for both girls and boys up to the end of primary 7, and boys only through secondary school is also located within the parish.

Two secondary schools, Currie Community High School and Firrhill High School, lie outside the immediate parish boundary but they are the schools which serve young people within the parish and the Parish Minister shares chaplaincy input with neighbouring ministers to support the young people attending.

There are two schools for young people with additional support needs, Woodlands Special School and Braidburn Special School. Woodlands is on the same site as Currie High School and serves approximately 80 pupils of secondary school age, while Braidburn is adjacent to Firrhill High School and accommodates approximately 120 pupils aged 3-18 years.

There are four care homes in the area.

Davidson House is run by the Salvation Army and has its own Chaplain. Colinton's former Minister conducted occasional communion services there for those residents who requested it.

Cairdean House and Thorburn Manor both opened in 2013. Monthly services were conducted on a rota basis with St Cuthbert's Episcopal Church and St John's Colinton Mains Parish Church. The service was presented at Cairdean first and then repeated at Thorburn Manor later that afternoon. Communion Services were conducted twice a year, one in the Church of Scotland tradition and one in the Episcopal Church format. Several elders and members of the congregation @ Colinton assisted at these services. Colinton Parish Church's contribution to these services was discontinued when the Minister resigned. We would look forward to resuming this work with the new Parish Minister.

Lorimer House Care Home is situated almost opposite the Juniper Green Church building. There used to be services held in one of the lounges of the care home on a monthly basis. More recently carers have accompanied those who wish to attend Sunday services, helping them cross the busy Lanark Road and settle in the sanctuary.

There are several sheltered housing complexes in the parish and residents who are congregation members have regular contact with our church visitors. At the St Margaret's Court sheltered housing complex a short service is held once a month.

There is a Camphill community called Tiphereth in the area which provides residential care and support for people with learning disabilities, autism and other complex needs. The community also provides a Day Service enabling members to engage in meaningful work activities. Prior to Covid several of the residential members regularly attended Sunday morning worship but only one or two now join in worship @ Colinton. We would like to explore re-establishing an active connection with our neighbours at Tiphereth.

Colinton has had a long and good working relationship with the British Army, regiments of which are based at Redford Barracks and Dreghorn Barracks, both within the parish.

## 4.0 Our Mission

On 1<sup>st</sup> July 2024, the congregations of Juniper Green and Colinton reached a pivotal point, coming together and committing to each other to follow a single path forward, as a united Edinburgh Pentlands Parish Church.

This was also seen as an opportunity to be thankful for everything that has been, for our rich histories, and for all the work that has brought us together to this point.

We are now travelling onwards, towards new and exciting experiences, building relationships in a spirit of grace and good will and carrying the good news of God's Kingdom, inspired by the living presence of our Lord Jesus Christ amongst us.



We have developed a Basis of Reviewable Charge and a copy of this is included in the Appendices. This sets out a framework for our work ahead.

We seek growth in terms of activity and interaction across all sections of the community, as well as an increase in folk worshipping together. And we see being visible, and attractive, utilising our assets well, and enhancing our ability to connect with people, as important ingredients for success.

We are committed to developing contemporary, relevant, welcoming and uplifting worship flexible in approach and style. We are proud of our fast growing Messy Church.

We are looking forward to working together with our appointed Parish Minister to develop a Mission Plan.

Later in this document, there is an introduction to the working groups of the Kirk Session, as well as some highlights of their activities, including aspirations for future developments, which will contribute to the Mission Plan.

## 5.0 Diversity & Inclusion

Edinburgh Pentlands Parish Church believes that all are created in God's image and that through Christ we are all children of God. A copy of our Statement of Inclusion is in the Appendices.

Edinburgh Pentlands Parish Church has chosen to depart from the Church's practice in relation to human sexuality in respect of the current vacancy.

## 6.0 The Congregation

Edinburgh Pentlands Parish Church currently has a Communion Roll of 832 members, 38 Adherents and 11 people on the Supplementary Roll.

The church family meets in services both @ Colinton and @ Juniper Green each Sunday morning. There are approximately 60-70 worshipping in each building on Sundays.

A good percentage of regular attendees are involved in worship activities, including being part of the Welcoming Team, participating in services - reading the lesson, leading prayers, participating in the musical activities of our church, and many other aspects of church life.

Although not included in the statistics for the Communion Roll, there is a steadily increasing Messy Church congregation which meets on the first Saturday in the month and regularly attracts 30+ children to its activities. This valuable work of Messy Church is discussed later, in the church activities section.

## 7.0 The Kirk Session

The Kirk Session for Edinburgh Pentlands Parish Church met for the first time on 13<sup>th</sup> August 2024. In view of the extent of business created by the union and the vacancy, the Kirk Session has been meeting monthly, but it is intended to reduce this frequency in the future.

The Kirk Session has 41 members.



There is a Session Clerk (the former Session Clerk of Colinton) and a deputy Session Clerk (the former Session Clerk of Juniper Green), a treasurer, roll keeper and two safeguarding co-ordinators.

Under the Charities and Trustees Investment (Scotland) Act 2005, as elders and trustees of the Edinburgh Pentlands Parish Church of Scotland, Kirk Session members are responsible for the general control and management of its activities and administration, and all trustees are expected to be actively involved in the operation of the Charity. This is managed through elders being members of different Working Groups.

For the new Kirk Session, the following Working Groups have been established. These groups are in the early days of developing their plans. The membership of these groups include elders and non-elders.

- *Finance* - responsible for ensuring that the funds of the congregation are properly administered and used for Church of Scotland purposes and to ensure that the necessary procedures are in place to manage all aspects of the financial activities of the Charity to enable the preparation of the trustees' annual report and financial statements in accordance with applicable law and UK Accounting Standards.
- *Property* - responsible for overseeing and managing the maintenance of the Church properties to ensure that they are well maintained and fit for purpose.
- *Pastoral Care* - responsible for identifying ways in which church members can best be supported pastorally, particularly those members who experience isolation and loneliness.
- *Worship, Prayer and Faith Development* - responsible for planning and running events that will promote Christian growth and sharing our faith; supporting the Parish Minister to develop worship within the congregation; supporting opportunities for multiple voices in worship; providing opportunities for members of the congregation to develop skills in leading worship and prayer and providing resources and opportunities to support the prayer life of the congregation.
- *Communications* - responsible for addressing the overall aspect of parish communications including the Church Magazine, Easter and Christmas cards, social media presence, website and logo.
- *Outreach* - responsible for developing and implementing an outreach strategy with the intention of engaging better with people and groups in our community, by creating and promoting events, projects and programmes that are open and attractive to a wide audience.
- *Messy Church* - providing fun and memorable activities for children and their families and offering a welcoming space for families to engage with the Church.





- *Swing Café* - responsible for managing the busy Swing Community Café and its many volunteers to provide high quality refreshments and a welcoming social space for the community.
- *Staffing Group* - supporting the staff employed by Edinburgh Pentlands Parish Church.

## 8.0 Worship Life

Edinburgh Pentlands Parish Church is a welcoming and inclusive congregation. The recently adopted Parish inclusion statement (see Appendices) underlines our commitment to ensuring that inclusivity is at the heart of the life of our Church and how we worship.

### 8.1 Worship Pattern

Services are presently held on Sunday mornings in both Colinton and Juniper Green church buildings. The Colinton service is held at 9.45am followed by the service @ Juniper Green at 11.15am. This pattern allows for worshippers to attend a venue, musical style, or time of their choice and offers flexibility for them to vary their attendance pattern to suit personal circumstances.



On the last Sunday of each month, there is a joint communion service alternating between Colinton and Juniper Green Churches. This has offered an opportunity for the wider church family to meet and get to know each other. This is something that we hope to build upon in the future.



Sunday Worship typically includes the same sermon and readings in both venues and draws on members of the congregation to read and bringing a range of voices to the Sunday service.

Music is an integral part of both services with Church organ and choir @ Juniper Green and organ, choir and praise band @ Colinton. Musical choices and styles are slightly different in both venues allowing attendees to follow their preferences.

Travel between Colinton and Juniper Green on Sundays is a challenge which the Pastoral Care Group is exploring. Public transport is not available on Sundays and with limited parking, there can be difficulties in ensuring that those who are older, infirm or do not drive can easily access both buildings. This calls for innovative solutions and transport options are currently being considered.

Live-streaming of services and subsequent posting of the Sunday service online took various forms during the Covid pandemic and has now become an important way of engaging a wider audience. There is a live stream from one service each week with the recording coming from alternating venues and being made available on YouTube thereafter. Viewers have reached over 100.



Special services and occasions are sometimes celebrated together, for example the late night Christmas Eve and Christmas Day services which saw the whole church family meeting in one place.

At other times, having services in both venues permits greater accessibility. For example, an early Christmas Eve service at 6.30pm was held in both buildings and Remembrance Sunday was commemorated in both church buildings to ensure that everyone who wanted to attend could easily access the service.

In order to facilitate concurrent services, this necessitates the support of both the Parish Minister and other worship leaders. We are fortunate to have able and willing members who contribute in this way to worship services within our church community.

## 8.2 Messy Church

In February 2023 we launched Messy Church on the first Saturday of the month, running from September to May. It meets in the Dreghorn Loan Hall @ Colinton from 2.30 - 4.00 pm.

The service takes the form of 50 minutes of activity time where we have seven to eight activities that are art, craft or science based, appealing to all ages. These activities are linked to our Bible Story or message. We follow this with a worship section which we call Together Time. This is 15 minutes of story, songs and a blessing. We then have 20 minutes for tea/coffee, snacks and chat. We have an enthusiastic team of 12 volunteers to run these sessions.



We are delighted that our Messy Church has been well received. We have had more than 100 children attend since we began and can have 37 children at a session, age range from newborn to 11 years, attending with their parents or close relatives.

We have now built up a contact list of 68 families who want to stay in touch. Almost all of these people are new to the Church. We are also pleased to have developed a core group of 15 families who attended half or more of our sessions in the last year.

There is a fantastic buzz in the hall when we have up to 80 people of all ages learning, sharing and growing together in God's love.

To expand our reach, developments for the future include exploring the possibility of running a Messy Church @ Juniper Green on a different Saturday from Colinton.

## 9.0 Church Activities

The activities briefly described below are gathered from what has been happening in each of the congregations. We have started to learn about each other's traditions and are enjoying exploring activities together, welcoming new friends into existing groups and considering new developments as we move forward as a new Church.

### 9.1 Worship, Prayer and Faith Development

The work has included:

- Events that will promote Christian growth and sharing our faith. For example, Lent Bible Study, Café Conversation to look at current issues from a Christian viewpoint, encouraging sharing of our faith.
- Supporting the Parish Minister in developing worship within the congregation. For example, acting as a sounding board where ideas can be shared, working with the Parish Minister to explore and develop new ideas and, where appropriate, taking on leadership responsibilities.
- Supporting opportunities for multiple voices in worship. For example, by organising a rota of Bible readers and leaders of prayers of intercession, taking part in leading worship, developing digital worship resources e.g. on YouTube or the Church website.
- Providing resources and opportunities to support the prayer life of the congregation. For example, by providing a weekly online prayer meeting, prayer focussing on current issues and praying with the Parish Minister or worship leaders before services.

### 9.2 Bible Study



At the core of our faith development activities is our Bible Study Group. @ Colinton this group met for two six-week courses during Lent and Autumn, while @ Juniper Green the Bible Study group met weekly on Zoom throughout the year. This is an area we hope to develop further.

### 9.3 Prayer Space

Several years ago, Prayer Space was founded @ Colinton. It is a small but growing group which meets on Zoom on Tuesday evenings to pray about issues in the world, country, community and church. It now includes members from both former congregations and is a positive example of the developing culture of working together.

### 9.4 Young People and Families

This is an area of ministry which we are keen to expand and develop alongside our new Parish Minister. Chaplaincy in local schools has provided a useful platform on which to develop important relationships with children and young people. Traditions, such as sharing books with children leaving primary school and transitioning to secondary education, supporting delivery of 'Bible Alive' in the local primary schools and hosting school church services, have given the parish church some visibility. We are keen to explore new opportunities to reach out to families in the newly enlarged parish and are open to new ideas to fulfil this aim.

### 9.5 Pastoral Care

Pastoral care is central to our mission. There are strong links with the local care homes and a regular pattern of services is delivered in those care homes and in the local sheltered housing complex, St Margaret's Court, Juniper Green.

Edinburgh Pentlands Parish Church employs a Pastoral Care Development worker who supports elderly members of our congregation. The Parish Development Worker visits people at home and in hospital and, through visits and phone calls, engages with those who could be isolated. She also liaises with the Parish Minister to ensure that a team approach supports individual needs.

In addition, a Pastoral Care Group has been established, currently comprising 17 members who are mainly elders but also involve other members of the congregation who are interested in pastoral care.

Across both Colinton and Juniper Green, there is a range of visiting initiatives which have taken different forms over the years, in response to the needs of the community.

There are regular Seniors' Teas @ Colinton and the 'soup and roll' lunch @ Juniper Green which offer opportunities for supportive fellowship and friendship. These initiatives and other work, supported by the Pastoral Care Development Worker, are now merging under the Pastoral Care Group which is looking forward to developing its work with the support of the new Parish Minister.

## 9.6 Outreach

The newly formed church is already engaged in outreach in a variety of ways. The two congregations of the former parishes have readily come together to enhance the outreach work.

### 9.6.1 Celebrations

The Church enjoys celebrations through events such as sharing Easter Eggs with older members of the community and with neighbouring church groups. At Harvest time there are collections for local food banks and projects. Christmas has a range of outreach work including support for the Blythswood Shoe Box appeal. At a joint gift service, held @ Colinton in 2024, there was a toy collection for the Salvation Army.

### 9.6.2 Support for the Homeless

Juniper Green has been active with the Bethany Care Van for many years and was delighted to extend the team to include volunteers from Colinton in 2024. The team is now well balanced between the two former parishes and is an example of where working together has shown huge benefits.



The team runs the care van 6 times a year, providing hot soup and refreshments to the homeless in the city.

The team comprises drivers, servers and support in the background to make soup and shop for supplies.

### 9.6.3 Community Relations

Edinburgh Pentlands Parish Church seeks to be an outward looking congregation, welcoming people into all of our church buildings. The buildings themselves are well used by the wider community providing a hub. Groups include Scouts, Guides, Brownies, Rainbows, yoga, Pilates and fitness classes, a dance school, boardgame club, history society, garden club, and a badminton club.

The Dreghorn Loan Hall @ Colinton hosts an independently run day nursery. The Stableroom Playgroup meets in the Colinton Church Rooms three mornings per week.

Both Juniper Green and Colinton have supported a range of local charities and organisations and the new Kirk Session is maintaining that tradition. There are monetary contributions to local charities from retiral offerings around the Christmas period each year.



### 9.6.4 The Swing Café



The Swing Café is located @ Colinton and is a lively community facility. It is open from 10am to 2pm, Tuesday to Saturday and is run by a paid Catering Manager and 55 volunteers

It first opened its doors in April 1999. The name was inspired by a poem written by Robert Louis Stevenson, featuring the swing which hung from the old yew tree in the manse garden. Robert Louis Stevenson used to play on this swing as a child when visiting his grandfather, who was the Minister at the time. The area has been frequented by many, including royalty, during its history.

It has offered volunteering opportunities to school students undertaking the Duke of Edinburgh Award Scheme.

## 10.0 Wider Social Life of the Church

The Guild of Friendship, Colinton Literary Society and The Green Strollers are three of the many social groups which are integral to the life of the Edinburgh Pentlands Parish Church congregation. These give opportunities for friendships to grow and develop within the church community.

### The Guild of Friendship

The Guild of Friendship meets fortnightly from September to June on Thursday afternoons at 2pm @ Juniper Green. All are welcome to join for an afternoon of fellowship and fun. The programme includes speakers, music, games, a cup of tea and a chance to make new friends.



### The Colinton Literary Society (The 'Lit')

The Society's programme of talks covers both literary topics and those of general interest, which appeal to the entire community from which its membership is drawn. The 'Lit' has hosted many eminent academics, authors, artists and musicians at its events. In 1911 Sir Ernest Shackleton gave a lecture entitled 'Furthest South', and in 2011 author Ian Rankin let us into his secrets of crime writing.

### The Green Strollers

Almost twenty years ago, a couple of individuals @ Juniper Green Church decided to start a walking group and the Green Strollers came into being. The numbers were slow to start, but now we have around 25 Strollers, with 10 to 15 people on any one walk.



We walk every three weeks throughout the year, weather permitting. The walks are organised and led by a group of six volunteers and are varied in distance and difficulty in order to accommodate all levels of ability.

In addition to the regular day walks, once a year, in September / October, the Strollers head off for a three-day walking weekend. We have visited a variety of places throughout the UK, including Callander, Melrose, Pitlochry, Tarbert, Loch Lomond, Braemar and Hexham. Once a year, we also meet for a celebratory dinner, typically around March time.



We are always happy to welcome new members. Notification of future walks can be found either on the website or in the church service intimations.

## 11.0 Ecumenical Relations

In the past, Colinton had a strong working relationship with St Cuthbert's Scottish Episcopal Church holding joint prayer meetings and working together in conducting services in the local care homes and we hope to reinvigorate that link.

Juniper Green worked with neighbours in Currie Kirk and shared a Children and Family Worker with that congregation until autumn 2023. With a shared high school chaplaincy and shared holiday clubs, Currie and Juniper Green were neighbouring villages with mutual interests and enjoyed working together. Traditionally, Holy Week Services were shared between Balerno, Currie and Juniper Green Churches.

There are well established partnerships with the Salvation Army over Christmas toy appeals and with Holy Trinity Wester Hailes in Easter egg distribution and food bank contributions at harvest time.

If possible, we should like to develop a relationship with the recently founded Redeemer Church in Colinton.

Ecumenical relations is an area we are keen to develop further.

## 12.0 World Church Links

### Fair Trade Table

After our worship on Sunday, the Fair Trade table @ Colinton is usually open for the congregation to make purchases. We promote the Fair Trade concept, buy and sell Fairtrade foods with the Fairtrade Foundation logo. All our proceeds and donations from the congregation are donated to Christian Aid. This year, we donated £380 in total.

Apart from selling Fairtrade rice, chocolate, coffee, snacks, we also sell donated cards from charities. We highlight the Fairtrade Fortnight table every year, write articles about how we could help the Fairtrade Foundation in everyday life and hold a Fair Trade reception for local Primary school children.

### **Christian Aid and Tear Fund**

Historically, there has been strong support for both Christian Aid and Tearfund. The congregation recognises the importance of providing financial and prayer support to these Christian charities which operate in marginalised communities in the developing world, seeking to eradicate poverty, overcome injustice and build resilience against the threats posed by climate change. The local Christian Aid committee @ Colinton has been ecumenical in nature, working with partners in the local Episcopal Church. Support has included running various fund raising events, retiral collections after services, for example, the Christmas Eve services, and awareness raising through updates in the church magazine.

### **Cambodia Connections**

For a number of years, the congregation @ Juniper Green has maintained a close relationship with the Cambodian Hope Organisation (CHO), a Christian NGO based in Poipet, an area located on the Thai-Cambodia border, well known for trafficking and gambling. CHO aims to equip and empower the church in Cambodia to strengthen the quality of life of disadvantaged rural people



and vulnerable children by cultivating hope for the future, where self-reliance among the communities is obtained through the support from CHO's income generating projects. Members of the congregation have travelled to Poipet twice, firstly in 2010 and then again in 2016, to strengthen the links between the congregation and the charity and to support their work in the region. The charity provides practical support, through painting and running activities in the organisation's School on a Mat (project taking education to remote villages with limited access to

local services) as well as providing spiritual development for local church leadership. The congregation also hosted Chomno In, the director of CHO, when he visited Scotland. The connection has regularly featured as part of the worship and prayer life of the congregation.

Previously, the Juniper Green congregation has provided financial support to CHO, through donations and fund raising events, which has supported their Safe Haven School for local young people in Poipet and the surrounding area, many of whom would not otherwise have access to education.

## 13.0 Staff

Edinburgh Pentlands Parish Church employs the following staff who are line managed by members of the staffing group.

- Church Officer (full time)
- Pastoral Care Development Worker (part time) who visits the elderly and those who are ill. She supports events such as the monthly Seniors Tea @ Colinton and the monthly soup and roll lunch @ Juniper Green
- Administrator (part time) who deals with incoming queries, prepares PowerPoint for the services and performs multiple other administrative tasks
- Administration Assistant (part time)
- Catering Manager (part time) who runs the Swing Café
- Organist/Band Leader (part time) @ Colinton
- Organist (part time) @ Juniper Green

## 14.0 Church Property

The church has several properties. These are listed below.

- Colinton Church, with attached halls
- Juniper Green Church, with attached halls
- Dreghorn Loan Hall
- The former Colinton Manse

The manse of the former Juniper Green Parish Church has been sold, while the manse of the former Colinton Parish Church is destined to be sold, as stated in the Basis of Union. A new manse has been purchased and the details of this are in Appendix G.

## 15.0 Finance

Edinburgh Pentlands Parish Church is financially sound and as at 31<sup>st</sup> December 2024 had met in full all requirements in respect of Ministries & Mission and Giving to Grow Contributions.

At 31 December 2024 unrestricted funds available to the Kirk Session exceeded £300,000.

## Appendix A

### Basis of Union

The congregation of Colinton Parish Church of Scotland (SC010313) and the congregation of Edinburgh Juniper Green Parish Church of Scotland (SC005197) shall be united from a date to be determined by Presbytery, and that on the following terms and conditions:

**1. Name:** The name of the united charge shall be Edinburgh Pentlands Parish Church of Scotland and SC010313 will be retained.

**2. Transference of Property and Funds:** The property and funds belonging to or held on behalf of each congregation shall belong to or be held on behalf of the united charge and any transference necessary shall be duly effected.

**3. Places of Worship:**

Both churches at present used and occupied by the congregations, designated 'A' in the approved Presbytery Mission Plan, shall be the places of worship of the united charge. Services shall be conducted in Colinton Parish Church and in Juniper Green Parish Church each Sunday at times to be decided by the Minister and Kirk Session, subject to the approval of Presbytery.

**4. Territorial Responsibility:** The bounds to be served by the united charge shall be designated as the bounds of the parishes of Colinton and Juniper Green, or as the Presbytery shall determine.

**5. Kirk Session:** The elders of both Kirk Sessions shall form with the minister the Kirk Session of the united charge.

**6. Congregational Management:** The temporal affairs of the united congregation shall be administered by the Kirk Session in terms of the Unitary Constitution, the Delegation of Assembly being authorised to issue the appropriate Deed of Constitution to the said congregation.

**7. Minister:**

Both charges being vacant, the united charge shall proceed to the appointment of a minister in terms of the Vacancy Procedure Act (Act 8, 2003). The minister shall be called on a Basis of Reviewable Charge in terms of section 9.1.1 of the Presbytery Mission Plan Act (Act 8, 2021).

**8. Manse:**

The present Colinton manse and the present Juniper Green manse shall both be sold to enable another property to be purchased which will then serve as the manse of the united charge. The remaining free proceeds of any such sale shall: (a) if falling within the scope of the General Trustees (Delegated Powers) Act (Act VII 1995), be credited to the benefit of the congregation in the Consolidated Fabric Fund; or (b) if not falling within the scope of the said Act, be held and applied for fabric purposes in connection with the properties of the congregation.

**9. Ministerial Support:** The stipend of the charge shall be paid in accordance with the terms of the National Stipend Scheme.



**10. Power to Readjust:** While the articles and terms shall form the Basis of Union for the two congregations now uniting, the united charge shall be free, like other congregations, to adjust arrangements under the authority of Presbytery as need may arise.

## Appendix B

### Basis of Reviewable Charge

By decision of the Presbytery of Edinburgh and West Lothian, permission is granted to the congregation of Edinburgh Pentlands Parish Church of Scotland (SC010313), to call a minister on a Basis of Reviewable Charge in terms of section 9.1.1 of the Presbytery Mission Plan Act (Act 8, 2021), and that on the following conditions:

- 1) The Presbytery shall review the appointment five years from the date of induction of the minister.
- 2) At the review, the Presbytery shall consider with the Kirk Session:
  - a) whether the life of the congregation exhibits the five Marks of Mission i.e.
    - i. to proclaim the Good News of the Kingdom;
    - ii. to teach, baptise and nurture new believers;
    - iii. to respond to human need by loving service;
    - iv. to seek to transform unjust structures of society, to challenge violence of every kind and pursue peace and reconciliation; and
    - v. to strive to safeguard the integrity of creation, and sustain and renew the life of the earth.
  - b) whether the life of the congregation exhibits the five purposes of the church, i.e. worship, service, discipleship, fellowship and evangelism and whether these are in a healthy balance
  - c) progress on the objective with regard to children and young people, to increase the number of children, young people and families that are engaging with the church.
  - d) progress on the objective with regard to community, to develop a church that is outward looking, is visible and has a positive impact on, and is engaging in, the community it is part of.
  - e) progress on the objective with regard to prayer space, to develop a capacity for people to engage with prayer both collectively and individually.
  - f) the extent to which leadership has been established and developed with suitable support and training to enable the resourcing of all aspects of church life.
  - g) the missional success of working with local partners, including other denominations
  - h) such other matters as may be relevant by that time.
- 3) Following such review, the Presbytery shall take a further decision on the future arrangements for ministry to the congregation and parish of Edinburgh Pentlands Parish Church of Scotland (SC010313), recognising that one of the options available to it is the termination of the tenure of the charge on giving the minister six months' notice in writing.

The minister shall be free to seek to demit or to be translated as in the ordinary case of any minister inducted to a charge, provided that, if this Reviewable Charge is his or her first charge, the Presbytery hereby agree that these conditions constitute exceptional circumstances in terms of Section 4 of the Vacancy Procedure Act (Act 8, 2003), and will accordingly issue the necessary Certificate if he or she seeks to be translated within five years.



## Appendix C

### History of Colinton Parish Church

Situated in a bend of the Water of Leith, the church at Colinton possibly existed before the first record. About the year 1095 Hailes, as it was then known, was given by Ethelred, a son of King Malcolm Canmore and Queen Margaret, to Dunfermline Abbey and the patronage of St Cuthbert is from at least this time. Like many earlier churches it was found that Hailes was not dedicated according to Roman Church procedure so Bishop de Bernam of St. Andrews came and dedicated the church on 27<sup>th</sup> September 1248.

The small church of Hailes survived military invasions by the Earl of Hertford in 1544 and Cromwell in 1650, not without loss and damage. It is assumed that the Kirk Session minutes may be amongst the losses as the earliest surviving minutes date from 7<sup>th</sup> August 1651. The reformation of 1560 led to the loss of church lands which supported the upkeep of buildings and clergy. Landowners became responsible for church property and the Minister's stipend. Fluctuations in church governance between Presbyterianism and Episcopacy led to three ministers of Colinton being deposed between 1639 till 1690 when Presbyterian government of the Church of Scotland was permanently established.

When the 'nouveaux riches' started to arrive in Colinton Parish in the 18<sup>th</sup> century with the break-up of some large estates, power did remain with other landowners as the Patronage Act of 1712 was passed and was criticised for the interference of civil law in ecclesiastical matters. In 1783, some people in Colinton objected to the imposition, by the Earl of Lauderdale (who owned the patronage), of Dr John Walker, Professor of Natural History at Edinburgh University. With other groups they formed a congregation of the Secession Church and built a church at Slateford within Colinton parish. At the Disruption in 1843, which was partly due to patronage, three elders and some other communicants left to join the Free Church. The year before the Disruption, the patronage of Colinton was given to the members of the congregation, making the incumbent minister, Rev. Lewis Balfour, the last to be installed by the patron. The patronage Act was finally repealed in 1874.

From the 18<sup>th</sup> century mills, on the Water of Leith and quarries at Redhall and Hailes expanded with a subsequent increase in the population of the parish. It is known that, by 1750, Hailes Quarry was producing fairly large quantities of stone.

The church building of 1636 was deemed unsafe and was replaced by a new and larger church in 1771.

The Union Canal opened in 1818 and the railway in 1847 passed close to the quarries in this northern part of the parish. In 1835 the church at Colinton had 1250 parishioners but only seats for 664, also it was reported that only 9% of adults in the village of Juniper Green had the right by payment of pew rent for a seat. The heritors agreed in 1837 that the church was sufficient for the parish. Dr Lockhart, the Minister, soon after his arrival, complained about "the nuisances that have sprung up". Near the church and manse, there being the Kirklands Mill on one side and the Hailes Mill on the other. His attempt to get a new manse built either at Firrhill or on the glebe above the valley was unsuccessful.

The glebe was sold to the Caledonian Railway for the construction of the branch from Slateford to Balerno in the 1870s. The line served the mills on the Water of Leith and also provided a convenient commuter route. The Railway Company also built the viaduct over the river to serve as access to

Colinton Station. This also diverted traffic from the old route passing the church and up the steep Kirk Brae.

The coming of the railway led to an increasing number of villas and housing being built in Colinton for workers in the mills. The construction of Redford Barracks which began in 1909 and the later acquisition of Dreghorn started the long association between the army and Colinton Parish Church. New parish churches were established at Craiglockhart in 1880 and Juniper Green in 1892. The incorporation of Colinton Parish into the City of Edinburgh in 1920 allowed the growth of housing estates in the 20<sup>th</sup> century and the creation of Church Extension churches at Fairmilehead (1938), Colinton Mains (1939), St John's Oxfords (1957), Holy Trinity (1969) and Slateford Longstone (1952). These churches all took parts of the original Colinton Parish to form their new parishes.

In the early 20<sup>th</sup> century, with the expansion in the population, there was a requirement for a larger church. The architect, Sidney Mitchell, produced designs and the Georgian building was demolished. The new church building rose in its place during 1907 and 1908. In modified form the old church's tower was rebuilt. Colinton Parish Church was one of the last churches built to the requirements of the heritors, the landowners responsible for, amongst other things, the upkeep of the church and manse. The heritors occupied the front rows of the galleries and had comfortable armchairs while their servants and tenants sat on hard pews. Those upstairs had no view except of the minister in the pulpit.

Building work continued in 1925 when the prefabricated community hall provided by Mr MacFie of Dreghorn in Dreghorn Loan was replaced by a new Church Hall. In the 1960s the manse stables and Session Room, beside the church, were converted and extended to form new Church Rooms. Lastly these Church Rooms were redeveloped, connected to the church and opened in 1998. This building, the vision of Rev George Whyte, designed by Page & Park Architects, won an RIBA commendation.

Visitors coming to the church pass the statue of Robert Louis Stevenson as a boy at the age when he stayed with his grandfather, Dr Lewis Balfour, in the manse. Visitors will then pass through the gates erected to commemorate the 900<sup>th</sup> anniversary of Prince Ethelred's gift. In the old kirkyard some seek out the grave of Lewis Balfour. In the north graveyard, formed in the 1890s following the destruction of the Hailes or Hole Mill by fire, the grave of the artist Phoebe Anna Traquair can be found. In 1917 the Kirklands Mill burnt down and the site was later cleared to form the south graveyard where the village War Memorial is situated. On entering the church rooms the visitor may see the yew tree on which RLS's swing hangs or go into the church to admire the architecture, relive memories or for private prayer and peace.

## Appendix D

### History of Juniper Green Parish Church

There were no churches in Juniper Green before the middle of the 19th century. At that time, Juniper Green was part of Colinton Parish and people had to walk or ride to Colinton to attend worship. Although neither minister in Currie or Colinton parishes came out at the Disruption, some members of both congregations joined the dissenters and started the Colinton and Currie Free Church. So it was that the first minister, Rev. Harry Anderson, was ordained in February 1844 and the church was built in 1845 just outside the then village of Juniper Green where Edinburgh Pentlands Parish Church @ Juniper Green now stands. Juniper Green village expanded considerably in the later 19<sup>th</sup> century resulting in a need to expand the church, which was reconstructed in 1879 to provide another 200 seats.

Over the latter half of the 19th century the expansion of the population of Juniper Green added to the problems of the Church of Scotland members who remained in Juniper Green. The first suggestion was to build a new Colinton Church between Juniper Green and Colinton but the heritors, who were then responsible for church building and maintenance, declined to do this. The result was a move to build a Mission Church of Colinton Kirk in Juniper Green.

In 1890, the new Craiglockhart Church was completed and the Iron Kirk (a form of prefabricated building) which the congregation had been using became surplus to requirements. A total of 120 members and adherents of the Church of Scotland in Juniper Green signed a petition to the Presbytery of Edinburgh for the Iron Kirk to be removed to Juniper Green. This was agreed and a site was found. Work started in the winter of that year, but disaster struck – the partly erected building was blown down during a gale on the 1<sup>st</sup> December 1891. Far from feeling dismayed it was considered to be a blessing in disguise as the old woodwork was unsound and it was able to be renewed. The Iron Kirk was re-erected and opened with 350 seats on 21<sup>st</sup> February, 1892. On that day 250 people trudged through snow to hear the opening sermon by the well-known blind preacher and hymn writer, the Rev. George Mathieson, then of St Bernard's Church, Edinburgh, but the evening service had to be abandoned because the preacher, the Rev Dr MacGregor, Moderator of the General Assembly was unable to get through the snowdrifts.

However, the people of Juniper Green were not yet satisfied, they wanted a permanent church built of stone. Only six months later a Building Committee was formed to consider building such a permanent stone church. A site, previously the site of Mrs Wright's dairy, was found across the Lanark Road from the Iron Kirk, now the site of St Margaret's Court. Such was the enthusiasm of the people concerned that the foundation stone of the new stone church was laid on the first Saturday in June, 1895, and the new church, later to be called St Margaret's, was opened by the Moderator of the General assembly in January, 1897. The Iron Church continued to be used as the Church Hall but on 26<sup>th</sup> December, 1907, it was destroyed by fire, only the old harmonium, a wooden chair, collection plate and the old church bell were saved.

At the Union of the Church of Scotland and the United Free Church of Scotland in 1929, there were two Church of Scotland congregations in Juniper Green – the existing St Margaret's congregation and the former Free Church congregation which was now renamed St. Andrew's Church of Scotland, Juniper Green. A few years later, in 1935, a fine new suite of halls was erected behind St Andrew's Church.



The name Juniper Green Parish Church appeared on 10 March 1974 when the two congregations of Juniper Green St Andrew's and Juniper Green St Margaret's united. St Margaret's Church was deemed surplus to requirements and was demolished to make way for the sheltered housing complex of St Margaret's Court named after the former church building. The former St Margaret's Church hall now serves as a community hall for the sheltered apartments complex of St Margaret's Court which was built on the ground previously occupied by the Church.

## Appendix E

### Statement of Inclusion for Edinburgh Pentlands Parish Church

*So in Christ Jesus you are all children of God through faith, for all of you who were baptized into Christ have clothed yourselves with Christ. There is neither Jew nor Gentile, neither slave nor free, nor is there male and female, for you are all one in Christ Jesus. (Galatians 3:26-28)*

Edinburgh Pentlands Parish Church believe that all are created in God's image, and that through Christ we are all the children of God. We follow Jesus' example and welcome all into our congregation regardless of race, ethnicity, gender, sexual orientation, gender identity, physical or mental ability, wealth, social background, or political beliefs. All are welcome to worship, serve, and participate fully in the life and ministry of the congregation. Living out our Christian calling, we:

- welcome the presence, gifts, and companionship of all on the journey of faith.
- embrace our diversity in all its forms and celebrate our unity as the body of Christ.
- provide a safe place for all to explore Christian faith through prayerful and considered study of scripture.
- deepen our relationships with one another and with Jesus Christ.
- stand against discrimination including racism, sexism, homophobia and transphobia.

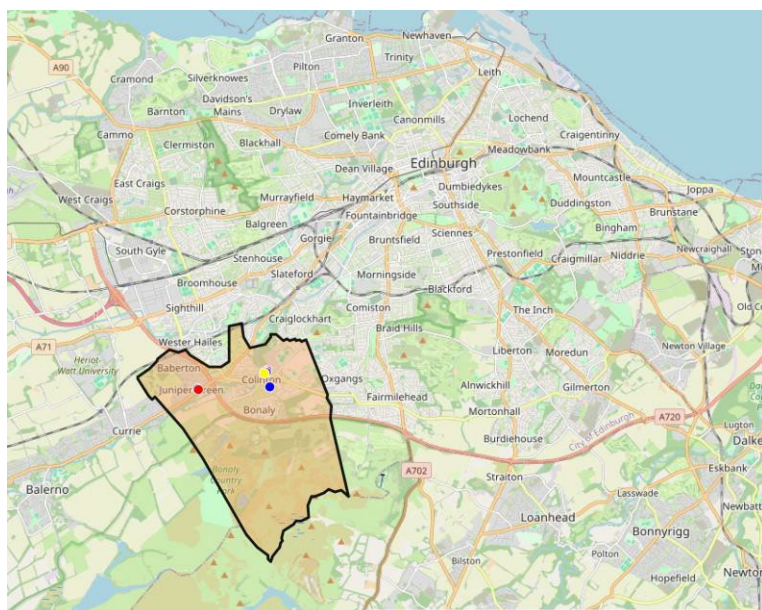


## Appendix F

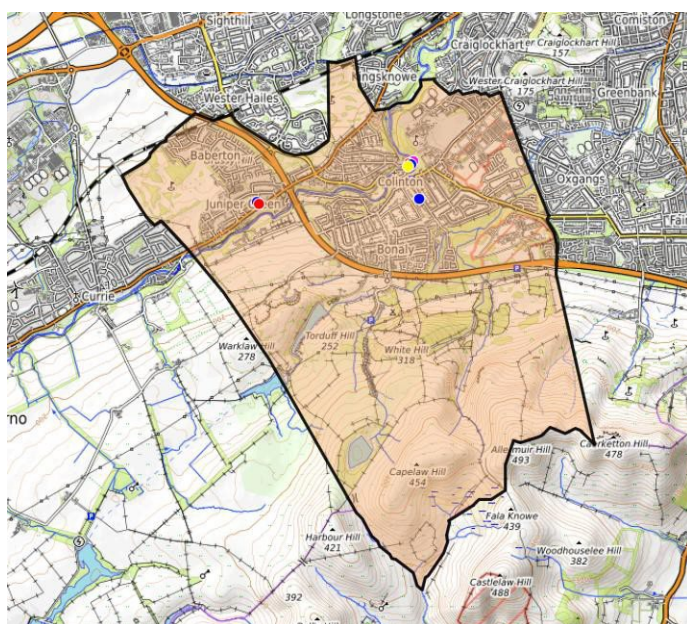
### Parish Maps and Key Statistics

#### Parish Maps

Edinburgh Pentlands Parish lies to the southwest of Edinburgh

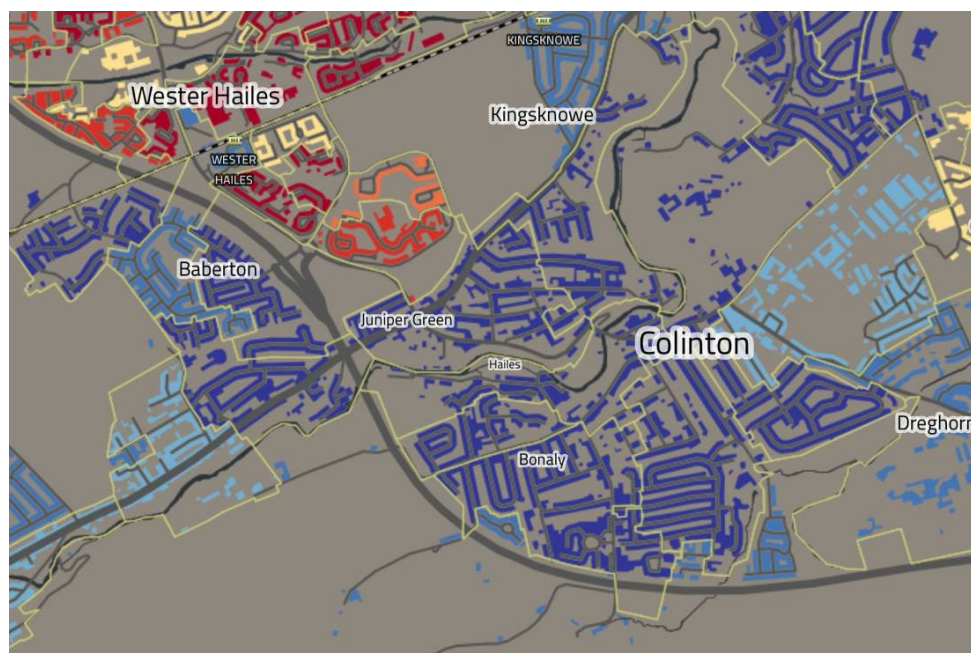


Edinburgh Pentlands Parish contains the 'villages' of Colinton and Juniper Green and the housing estates of Bonaly and Baberton.





Deprivation statistics covering the parish and surrounding areas.



The colours used in this depiction of Southwest Edinburgh shows that Edinburgh Pentlands Parish contains areas in the 30% least deprived of the general population whilst bordering areas with far higher deprivation.



## Key Statistics

The table below contain an abstract of information from the Church of Scotland parish statistics.

<b>Population</b>		<b>11,974</b>
<b>Age</b>		%
	Pre-School	5.54
	Primary School	8.32
	High School	5.63
	Student Age	8.92
	Young Adult	21.31
	Mature Adult	30.82
	Elderly	16.88
	Very Elderly	2.59
<b>Religious Affiliation</b>		
	Church of Scotland	37.56
	Roman Catholic	8.97
	Other Christian	8.84
	All Other	2.42
	No Religion	35.88
	Not Stated	6.33
<b>Ethnicity</b>		
	White-Scottish	79.51
	White-Other British	12.74
	White-Other	3.38
	Mixed	0.56
	Asian	2.76
	Other	1.05
<b>Highest Educational Qualification</b> (for all people over 16)		
	None	12.82
	School 16	18.72
	School 18	14.24
	Further Education	7.36
	Higher Education	46.85
<b>Perceived General Health</b>		
	Very Good	63.94
	Good	26.12
	Fair	7.46
	Bad	1.85
	Very Bad	0.63
<b>Household Tenure</b> (Occupied Households)		
	Owned	84.12
	Social Rented	6.47
	Private Rented	8.69
	Rent Free	0.72
<b>Economic Activity</b> (Aged 16-74)	<b>Economically Active</b>	67.67
	Part Time	13.68
	Full Time	39.32
	Self Employed	9.98
	Unemployed	2.07
	Student	2.62



	<b>Economically Inactive</b>	32.33
	Retired	19.77
	Student	6.29
	Home Based	3.64
	Sick or Disabled	1.62
	Other	1.00
<b>Occupations</b>		
	Professional	30.00
	Associate Professional	17.00
	Administration	12.50
	Skilled Trades	6.50
	Caring & Leisure	6.50
	Sales	6.50
	Process Operatives	4.00
	Elementary	4.00
	Managers	13.00

## Appendix G

### Details of New Manse



Originally constructed in the 1920s, the Manse is situated at 418 Lanark Road, Edinburgh, which is within walking distance and equidistant to both Colinton and Juniper Green churches. The house reflects the charm of the Arts and Crafts movement and is in walk-in condition with an Energy Performance Certificate (EPC) rating of C.

The accommodation is arranged over two floors. The ground floor comprises reception hall with WC and coat cupboard, living room with wood burning stove and French doors out to the patio, sitting room, dining room, and a bright sunroom overlooking the garden. The fitted kitchen and breakfast room are complemented by a separate utility room.

Upstairs comprises the principal bedroom (ensuite), three further double bedrooms and a family bathroom with a freestanding bath and separate shower enclosure. An extensive floored loft provides excellent storage space.

The lovely garden to the rear includes a sunny and secluded patio, while beyond lies an extensive, well-kept lawn and a charming orchard-style area with apple trees, blossom trees, a vegetable patch, greenhouse and a shed. The front and side gardens are equally well-established and provide year-round colour and privacy.

The Manse is fitted with double glazing and gas central heating with Hive thermostat and a modern boiler.

The Manse sits within the catchment area for Juniper Green Primary School and the newly built Currie Community High School



